

Because every home has a story,
and we are here to tell it...

REZIDE

Distinctive homes. Beautifully sold.



info@rezide.group | www.rezide.group | 01509 274474

REZIDE SPECIAL EDITION



Coplow House
Billesdon, Leicestershire

WWW.REZIDE.GROUP

Welcome Home


Coplow House is an exceptional, individually designed country home, extending to approximately 3,800 sqft and set within a beautifully landscaped 0.31 acre plot with far-reaching views across open countryside.

Completed in 2019, the home has been thoughtfully created for modern family living, where generous proportions, natural light and high-quality finishes combine to deliver a home that feels both impressive and effortlessly liveable.



Zachary Oldershaw
Founder

REZIDE

 07712263185
Enquire. Zachary@rezide.group

Coplow House









At the heart of the home lies a beautifully crafted open-plan kitchen by Martin Moore, designed with both entertaining and everyday living in mind.

Bespoke cabinetry is paired with granite worktops and a statement island, creating a sociable and functional space. Bi-fold doors open onto a sunken terrace, while the adjoining garden room—framed by full-height glazing—draws in uninterrupted views of the surrounding landscape, blurring the line between inside and out.











Beyond the main living space, the home offers a selection of versatile reception rooms.

A dual-aspect lounge provides a more intimate setting, centred around a multi-fuel stove, while a separate snug or home office offers flexibility for modern lifestyles—whether working from home or creating a quiet retreat.





The principal suite is a calm and considered space, enjoying elevated views across open countryside.

A walk-in dressing room and contemporary en-suite complete the suite, creating a private and well-balanced environment designed for both comfort and practicality.







Four further double bedrooms are arranged around a spacious galleried landing.

A well-appointed guest suite benefits from its own en-suite, while the remaining bedrooms are served by a stylish family bathroom. Each room has been designed to maximise light, space and outlook, continuing the sense of quality found throughout the home.







The property sits within a mature plot of approximately 0.31 acres, with landscaped gardens designed to complement both the home and its surroundings.

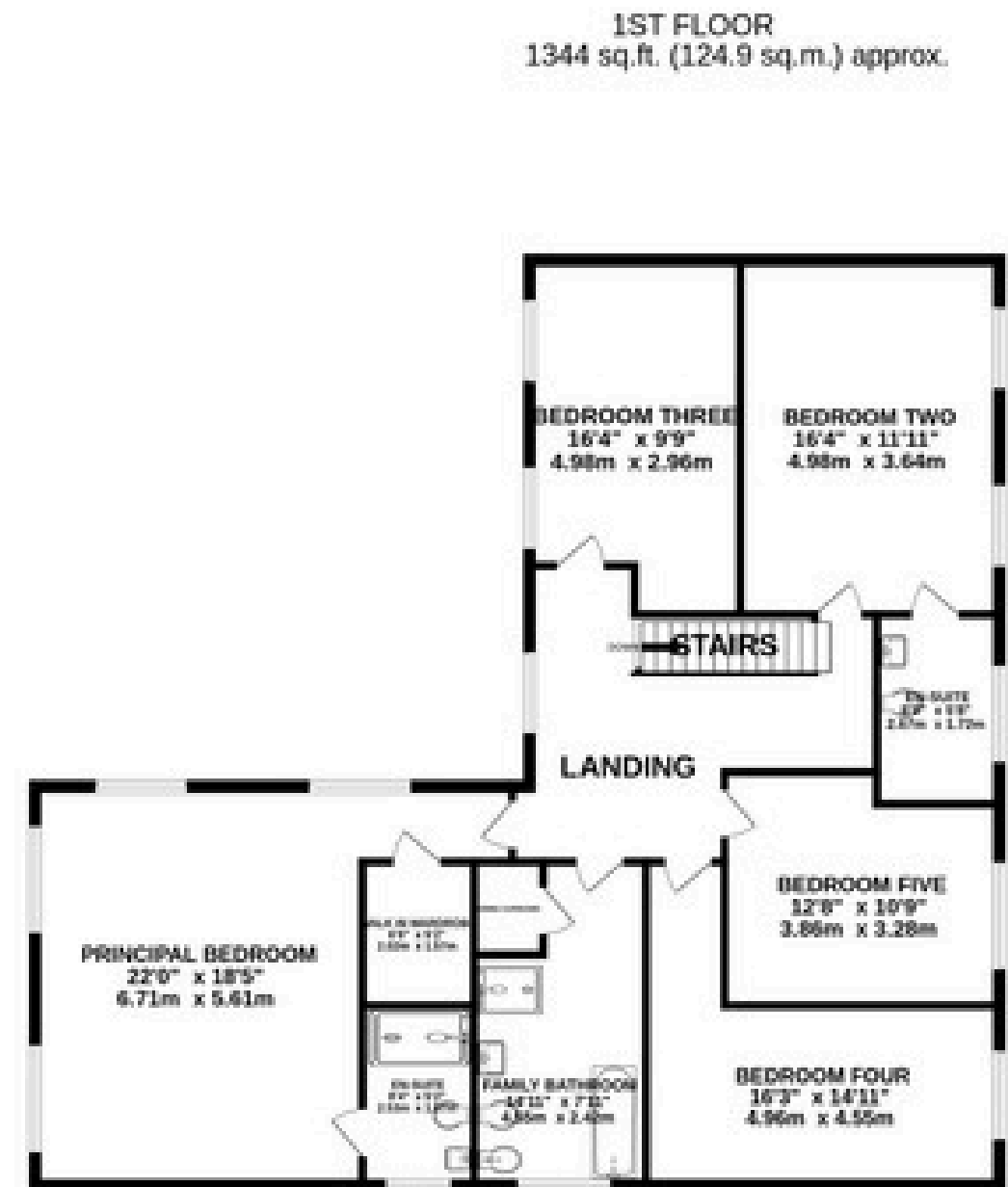
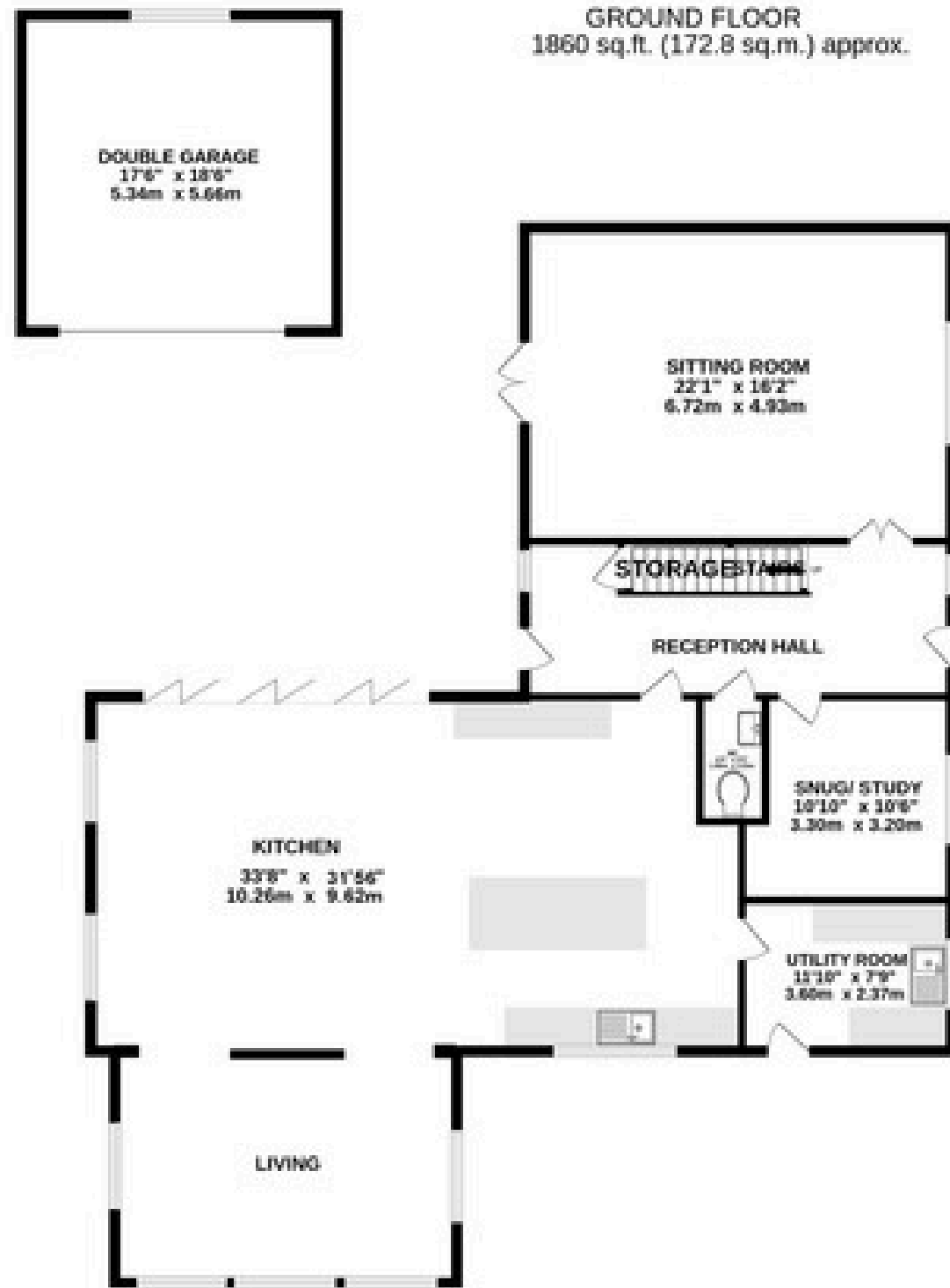
A wide block-paved driveway leads to a detached double garage, while the gardens offer a variety of seating areas, lawns and established planting—all positioned to take full advantage of the panoramic countryside views.

Situated in the sought-after village of Billesdon, Coplow House enjoys a peaceful setting with a strong community feel, yet remains well connected to Market Harborough, Uppingham and Oakham, along with a selection of highly regarded schools.









TOTAL FLOOR AREA : 3203 sq.ft. (297.6 sq.m.) approx.

Whilst every attempt has been made to ensure the accuracy of the floorplan contained here, measurements of doors, windows, rooms and any other items are approximate and no responsibility is taken for any error, omission or mis-statement. This plan is for illustrative purposes only and should be used as such by any prospective purchaser. The services, systems and appliances shown have not been tested and no guarantee as to their operability or efficiency can be given.
Made with Metropix ©2026



Coplow House



Coplow House combines striking design with effortless everyday living, offering beautifully considered spaces that connect seamlessly with its surroundings.

Set within an unspoilt village yet well connected to key market towns and schooling, it represents a rare opportunity to acquire a modern country home of both style and substance.